

21.5-inch Waveform HDSDI & HDMI Studio LCD Monitor

S-1222F

Features:

- ◆ Full HD 1920×1080, H178°/V178° , 1000:1 Contrast
- ◆ HD/SD-SDI, HDMI, CVBS multi formats input and loop output
- ◆ HDMI converted to SDI output
- ◆ 16-ch SDI embedded audio meter / 8-ch HDMI audio meter display
- ◆ TSL 3.1/4.0 UMD and Text-TALLY display
- ◆ Waveform / Vector scope / Histogram / Focus assist / Timecode / False color / Blue only / Zebra
- ◆ Magnetic LCD protective glass
- ◆ V-mount / Anton Bauer plate, main/backup DC in



Introduction:

The S-1222F is a 21.5-inch HDSDI/HDMI studio LCD monitor, with a Full HD resolution 1920 ×1080 panel. It integrates a wide range of professional functions including waveform, vector scope, RGB histogram, red/blue switchable peaking, focus assist, false color, blue only, zebra, rotate and flip, 16-ch HDSDI audio meter, time code, and internal color bars.

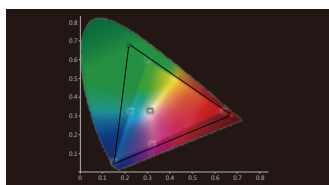
S-1222F supports UMD and Text-TALLY display under TSL 3.1/4.0 protocol.

The monitor accepts 2 HD/SD-SDI, 1 HDMI and 1 Composite video, and has 2 HD/SD-SDI loop through outputs, 1 HDMI loop through output, and 1 HDMI converted to SDI output.

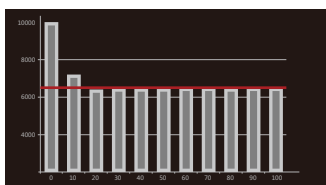
It is powered via a 4-pin XLR 11-17V DC connector or V-mount / Gold-mount battery mounts.

Color Reproduction

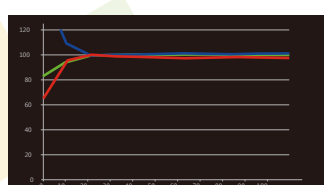
The S-1222F adopts high quality LCD panels and offers accurate color reproduction. The color calibration has been optimized in the new firmware, and users can adjust color temperature by RGB Gain and Bias.



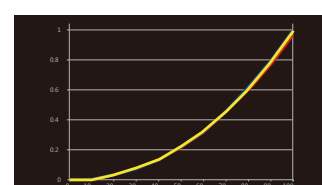
Color Gamut



Color Temperature



RGB Balance



Gamma Luminance

Specifications:

LCD Performance

| | |
|---------------|----------------------|
| Size | 21.5 inches |
| Resolution | 1920×1080 |
| Display area | 477×268 mm |
| Aspect ratio | 16:9/4:3 adjustable |
| Color system | NTSC/PAL |
| Brightness | 250cd/m2 |
| Contrast | 1000:1 |
| Color | 16.77 million colors |
| Viewing angle | H/V:178/178 |

Input and Output

| | | |
|--------|--------|----------------------------------|
| Input | 2 BNC | (2) HD/SD-SDI in |
| | 1 BNC | (1) Composite in |
| | 1 HDMI | (1) HDMI in |
| Output | 2 BNC | (2) HD/SD-SDI loop through out |
| | 1 BNC | (1) HDMI converted to SDI output |
| | 1 HDMI | (1) HDMI loop through output |

Video Format

| | | |
|-----------|--|--|
| SDI | SMPTE-274M | 1080i (60 / 59.94 / 50) |
| | | 1080p (30 / 29.97 / 25 / 24 / 23.98) |
| | SMPTE-RP211 | 1080psf (30 / 29.97 / 25 / 24 / 23.98) |
| | SMPTE-296M | 720p (60 / 59.94 / 50) |
| | SMPTE-125M | 480i (59.94) |
| HDMI | ITU-R BT.656 | 576i (50) |
| | HDMI | 480i / 576i / 480P / 576P |
| | | 1080i (60 / 59.94 / 50) |
| | | 720p (60 / 59.94 / 50) |
| Composite | 1080p (60 / 59.94 / 50 / 30 / 29.97 / 25 / 24 / 23.98) | |
| Composite | PAL/NTSC | |

General

| | |
|---------------------|----------------------|
| Working voltage | DC / battery 11V-17V |
| Power consumption | ≤ 45W |
| Working temperature | 0 °C ~ +40 °C |
| Working humidity | 10% ~ 90% |
| Storage temperature | -15 °C ~ +60 °C |
| Storage humidity | 10% ~ 90% |
| Dimensions | 525×381×135 mm |
| Net weight | 6.87kg |

SWIT Electronics Co., Ltd.

Website: www.swit.cc
 Email: contact@swit.cc
 Tel: +86 25 85805753
 Fax: +86 25 85805296

Distributed by:

GLOBALMEDIAPRO, s.r.o.
<http://globalmediapro.cz>
 Tel: +420 604832235