

21.5-inch 3GSDI & HDMI LCD Monitor

S-1221H

Features:

- ◆ Full HD 1920×1080, H178°/V178° viewing angle, 1000:1 Contrast
- ◆ 3G/HD/SD-SDI, HDMI, CVBS multi formats input and loop output
- ◆ 2-ch SDI embedded audio meter / HDMI audio meter display
- ◆ Focus assist / SDI Timecode / Blue only / Zebra
- ◆ Magnetic LCD protective glass (optional)
- ◆ V-mount / Anton Bauer mount plate (optional)



Introduction:

The S-1221H is a 21.5-inch 3G/HD/SD-SDI & HDMI studio LCD monitor, with a Full HD resolution 1920 × 1080 panel.

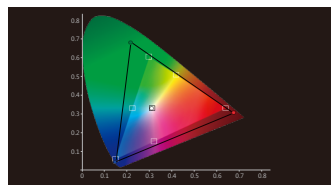
It integrates a wide range of professional functions including peaking focus assist, blue only, zebra, rotate and flip, 2-ch embedded audio meter display, and SDI time code display.

The S-1221H accepts 2 3G/HD/SD-SDI, 1 HDMI and 1 Composite video, and has 1 3G/HD/SD-SDI loop through output and 1 HDMI loop through output.

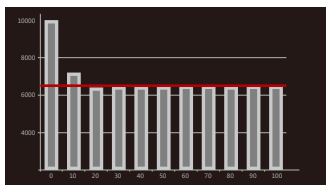
It is powered via a 4-pin XLR 11-17V DC connector or V-mount / Gold-mount battery mounts.

Color Reproduction

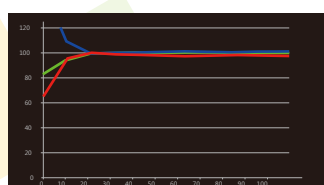
The S-1221H adopts high quality LCD panels and offers accurate color reproduction. The color calibration has been optimized in the new firmware, and users can adjust color temperature by RGB Gain and Bias.



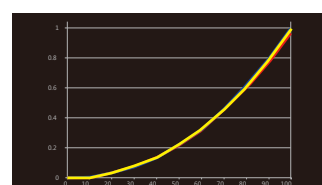
Color Gamut



Color Temperature



RGB Balance



Gamma Luminance

Specifications:

LCD Performance

Size	21.5 inches	
Resolution	1920×1080	
Display area	477×268 mm	
Aspect ratio	16:9/4:3 adjustable	
Color system	NTSC/PAL	
Brightness	250cd/m2	
Contrast	1000:1	
Color	16.77 million colors	
Viewing angle	H/V:178/178	

Input and Output

Input	2 BNC	(2) 3G/HD/SD-SDI in
	1 BNC	(1) Composite in
	1 HDMI	(1) HDMI in
Output	1 BNC	(1) 3G/HD/SD-SDI loop through out
	1 HDMI	(1) HDMI loop through output

Video Format

SDI	SMPTE-425M	1080p (60/59.94/50)
	SMPTE-274M	1080i (60 / 59.94 / 50)
		1080p (30 / 29.97 / 25 / 24 / 23.98)
	SMPTE-RP211	1080psf (30 / 29.97 / 25 / 24 / 23.98)
	SMPTE-296M	720p (60 / 59.94 / 50)
	SMPTE-125M	480i (59.94)
HDMI	ITU-R BT.656	576i (50)
	HDMI	480i / 576i / 480P / 576P
		1080i (60 / 59.94 / 50)
		720p (60 / 59.94 / 50)
1080p (60 / 59.94 / 50 / 30 / 29.97 / 25 / 24 / 23.98)		
Composite	PAL/NTSC	

General

Working voltage	DC / battery 11V-17V
Power consumption	≤ 40W
Working temperature	0 °C ~ +40 °C
Working humidity	10% ~ 90%
Storage temperature	-15 °C ~ +60 °C
Storage humidity	10% ~ 90%
Dimensions	525×381×135 mm
Net weight	6.87kg

SWIT Electronics Co., Ltd.

Website: www.swit.cc
 Email: contact@swit.cc
 Tel: +86 25 85805753
 Fax: +86 25 85805296

Distributed by:

GLOBALMEDIAPRO, s.r.o.
 Website: www.globalmediapro.cz
 E-mail: sales@globalmediapro.cz
 Tel: +420 604832235